

Table of Contents

Weird USB Bluetooth Music receivers 2

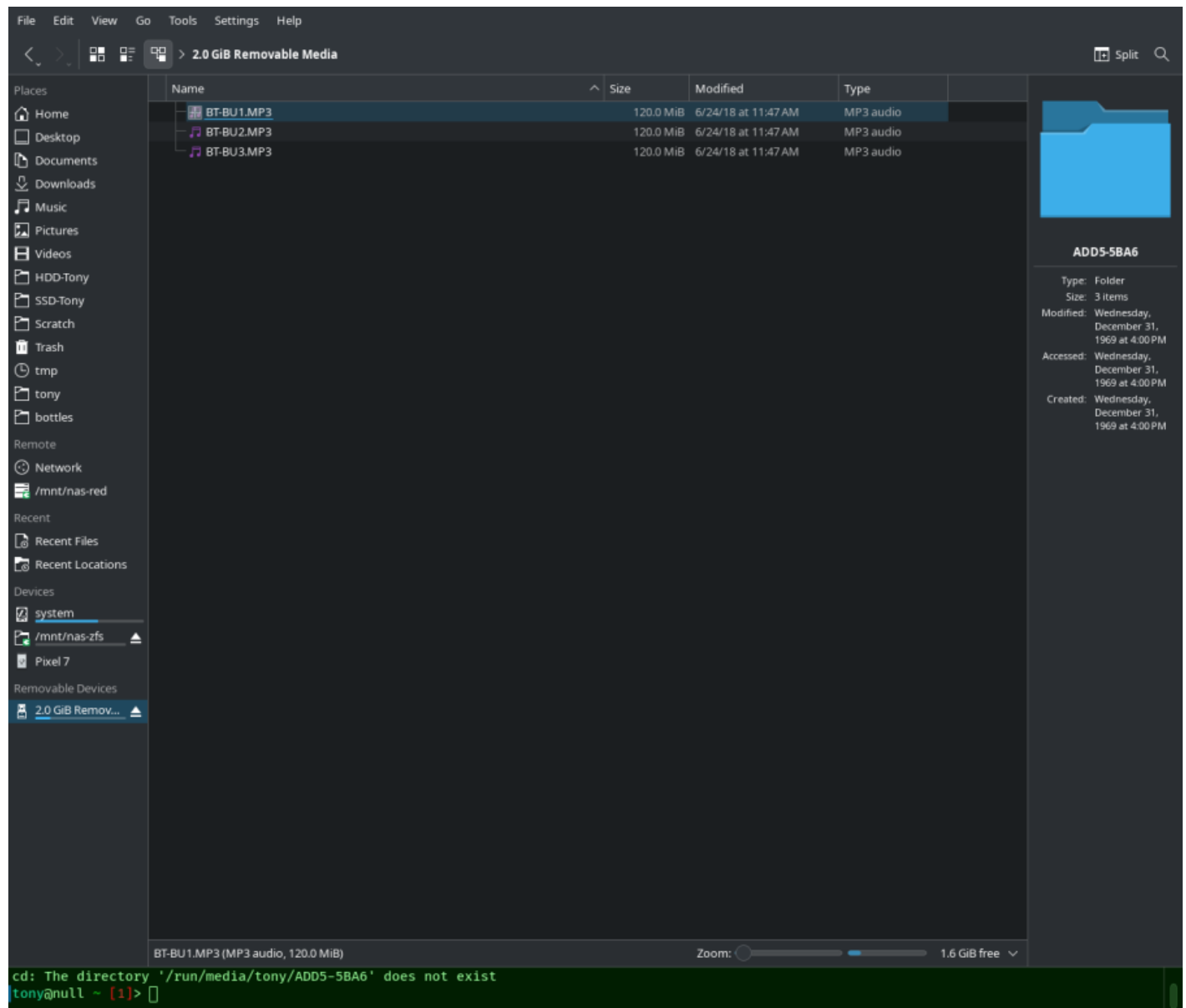
Weird USB Bluetooth Music receivers

My USB powered bluetooth audio receiver STARTED SHOWING UP AS A MASS STORAGE device.

I DIDN'T EVEN KNOW THAT THING HAD DATA LINES?!?

Did I get rubber-duckied by a BLUETOOTH RECEIVER?

WAIT YOU CAN MOUNT THE STORAGE DEVICE?!?



WTF IF YOU PLAY IT, THE FILE HAS LEGIT MP3 TAGS

```

File Edit View Bookmarks Plugins Settings Help
tony@null ~> ls -lah /run/media/tony/ADD5-5BA6/
total 361M
drwxr-xr-x  2 tony tony  32K Dec 31  1969 ./
drwxr-xr-x+ 3 root root   60 Jul  7 15:02 ../
-r--r--r--  1 tony tony 120M Jun 24  2018 BT-BU1.MP3
-r--r--r--  1 tony tony 120M Jun 24  2018 BT-BU2.MP3
-r--r--r--  1 tony tony 120M Jun 24  2018 BT-BU3.MP3
tony@null ~> mpv /run/media/tony/ADD5-5BA6/BT-BU1.MP3
[ffmpeg/demuxer] mp3: Estimating duration from bitrate, this may be inaccurate
(+) Audio --aid=1 (mp2 2ch 48000Hz)
File tags:
Artist: btdongle
Album: bt dongle
Date: 2019
Title: BT MUSIC1
AO: [pipewire] 48000Hz stereo 2ch s16p
A: 00:00:00 / 01:14:53 (0%)
Exiting... (End of file)
tony@null ~> mpv /run/media/tony/ADD5-5BA6/BT-BU1.MP3

```

```

File Edit View Bookmarks Plugins Settings Help
libavcodec      61.  3.100 / 61.  3.100
libavformat     61.  1.100 / 61.  1.100
libavdevice     61.  1.100 / 61.  1.100
libavfilter    10.  1.100 / 10.  1.100
libswscale      8.   1.100 / 8.   1.100
libswresample   5.   1.100 / 5.   1.100
libpostproc    58.  1.100 / 58.  1.100
[mp3 @ 0x77b664000c80] Estimating duration from bitrate, this may be inaccurate
Input #0, mp3, from '/run/media/tony/ADD5-5BA6/BT-BU1.MP3':
  Metadata:
    title       : BT MUSIC1
    album       : bt dongle
    artist      : btdongle
    date        : 2019
  Duration: 01:14:53.88, start: 0.000000, bitrate: 224 kb/s
  Stream #0:0: Audio: mp3 (mp3float), 48000 Hz, stereo, fltp, 224 kb/s
^C
tony@null ~ [123]>

```

OH SHIT I Think this is for it to work on crappy stereos that just play MP3 from a flash drive!!!
 To adapt them to work with bluetooth
 hm I don't hear anything and the mp3 file exits though
 so I guess you need a dumber player that doesn't try to seek in a file
 WAIT I THINK I KNOW WHAT THE OTHER FILES ARE
 YOU CAN'T PLAY THEM, BUT IF YOU OPEN IT, IT TELLS THE PHONE TO GO TO THE NEXT SONG
 so it's used to detect when you pressed previous/next!!! and from that, it signals to the bluetooth device

to go back/forward

who the f*** makes this ASIC?!? There's no way this thing is economies of scale

From:

<https://wiki.tonytascioglu.com/> - **Tony Tascioglu Wiki**

Permanent link:

https://wiki.tonytascioglu.com/articles/weird_usb_bluetooth_music_receivers?rev=1720390722

Last update: **2024-07-07 22:18**

